

CLANGSONIC®

震浪超声



SPECIFICATION LIST OF SONOCLG CLEANERS

Model	SONOCLG UC150	SONOCLG UC300	SONOCLG UC650
Overall Dimension(mm)	439*198*316	428*264*316	635*326*416
Tank Inner Dimension(mm)	300*150*150	300*240*150	500*300*200
Capacity(Liter)	6.8	10.8	30
Operating Volume(Liter)	5.7	9.2	25.5
Transducer QTY	3	6	13
Frequency (KHz)	28/40K	28/40K	28/40K
Max. Output (Watts)	150W	300W	650W
Casing	Rugged stainless steel (S.S.)		
Mains Supply	220V±10%,50/60HZ		
Heating	auto-control heater	auto-control heater	auto-control heater
Net Weight	8kgs	11.5 kgs	18kgs
Gross Weight	10kgs	14kgs	24kgs

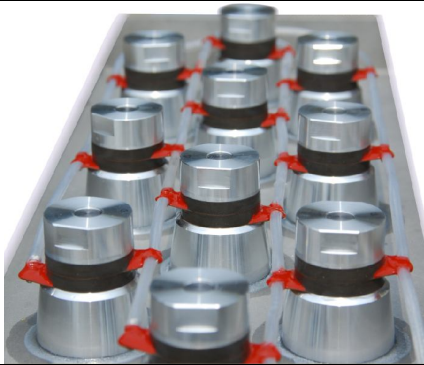
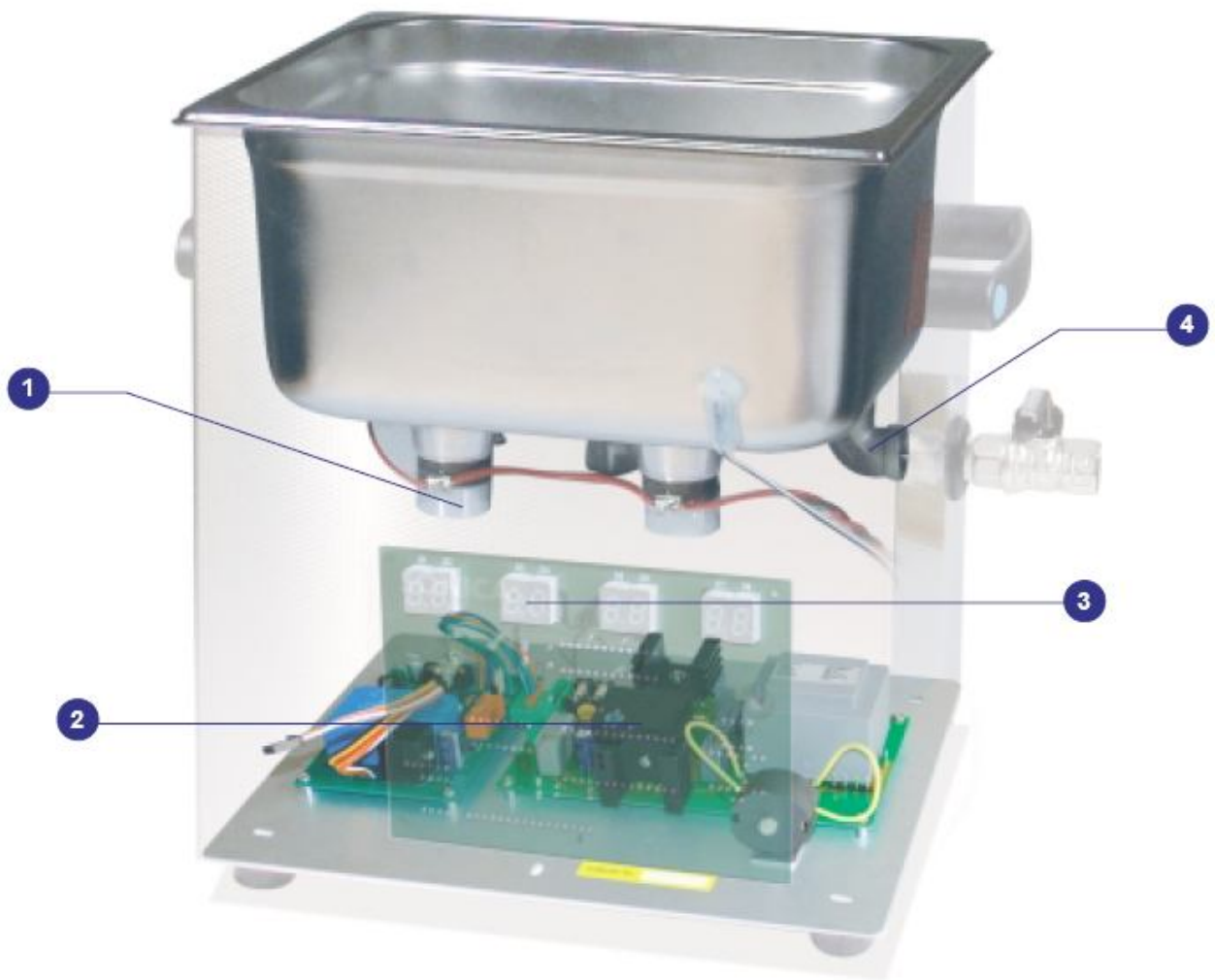
Characteristics of Integrated Cleaner

- Full convenience in use and display for all types of cleaners
- Easy to operate – self-explanatory symbols
- Well recognizable parameters, either target or actual values – brightly lighting LED-display
- Simple but complete operation
- Heater 20–99 °C, thermostatically adjustable, with LED-display for target value and actual value of temperature
- Auto save setting parameters, display last settings when power on
- Timer for countdown and continuous operation
- DEGAS: preset pulse sound level for removing unwanted air bubbles, visible at LCD-display
- Pulse-degassing when heating would accelerate the cavitations
- Timing switch-off
- Sweep for permanent sound field oscillation ensures even and gentle cleaning
- Reset function: freely reset to default settings
- One-piece welded drain bow
- CLANGSONIC PZT-transducers and process technology ensure Max. performance and lifespan
- Customization on request

Protection:

- Overload protection
- Short circuit protection
- Overheat protection

Power Capacity	up to 600Watts
Frequency range	15kHz-200kHz (600W when < 40KHz)
power supply	AC 220V 50 Hz
power consumption	up to 3A



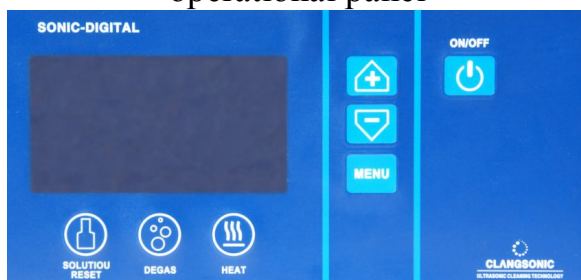
Transducer array:

- Highly identical transducers
- Max. acoustic output design
- Advanced bonding technology

full stainless steel cool-press welding allows minimal impedance in wiring, extraordinary tensile strength, shearing strength and super vibration-resistant, corrosion-resistant and high-temperature-resistant properties, which significantly increase operating speed, avoiding wire fall off or breakup






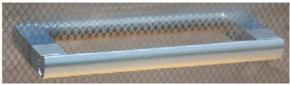
operational panel



Based on intelligent MPU, with pulse, heat-control, timer, self-protection. Stable signal process, excellent driving effect

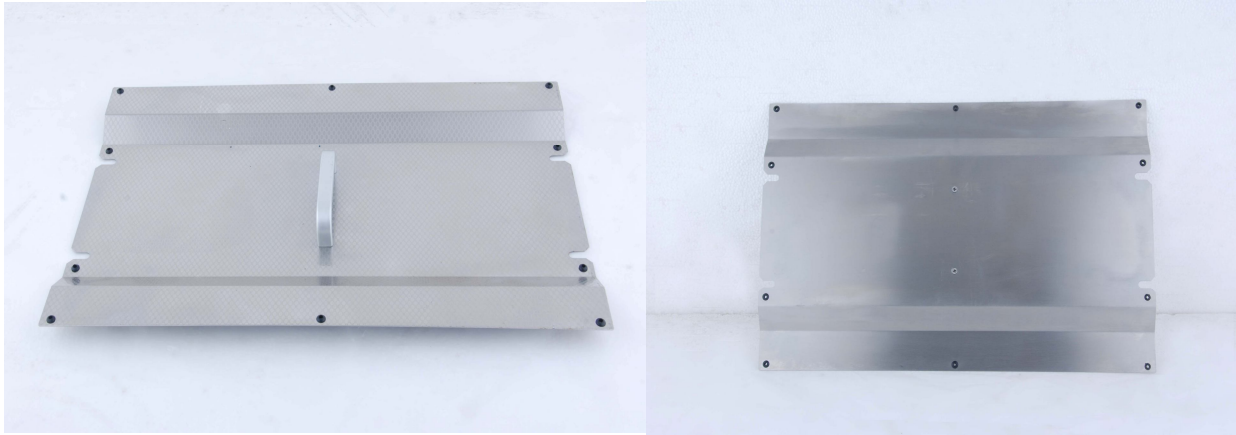




			
<p>Rugged stainless steel as housing, longer lifespan, more convenient handle</p>	<p>High quality check valve, one-piece welding process</p>	<p>Combine plug and switch, more rational design inside</p>	<p>stainless steel handle, ergonomic design</p>

Accessories

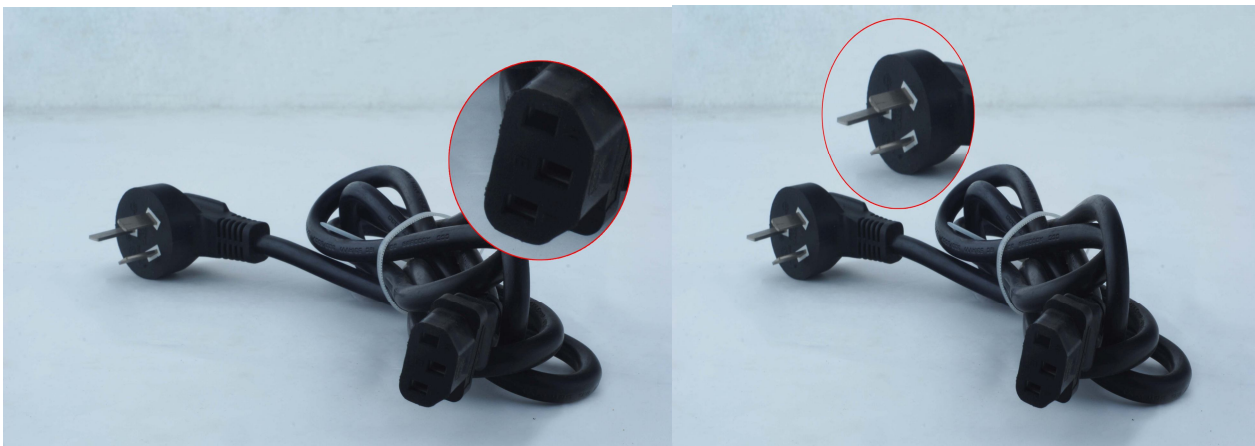
Stainless Steel Cover



Cleaning Basket



Power Supply Cable



Package

